

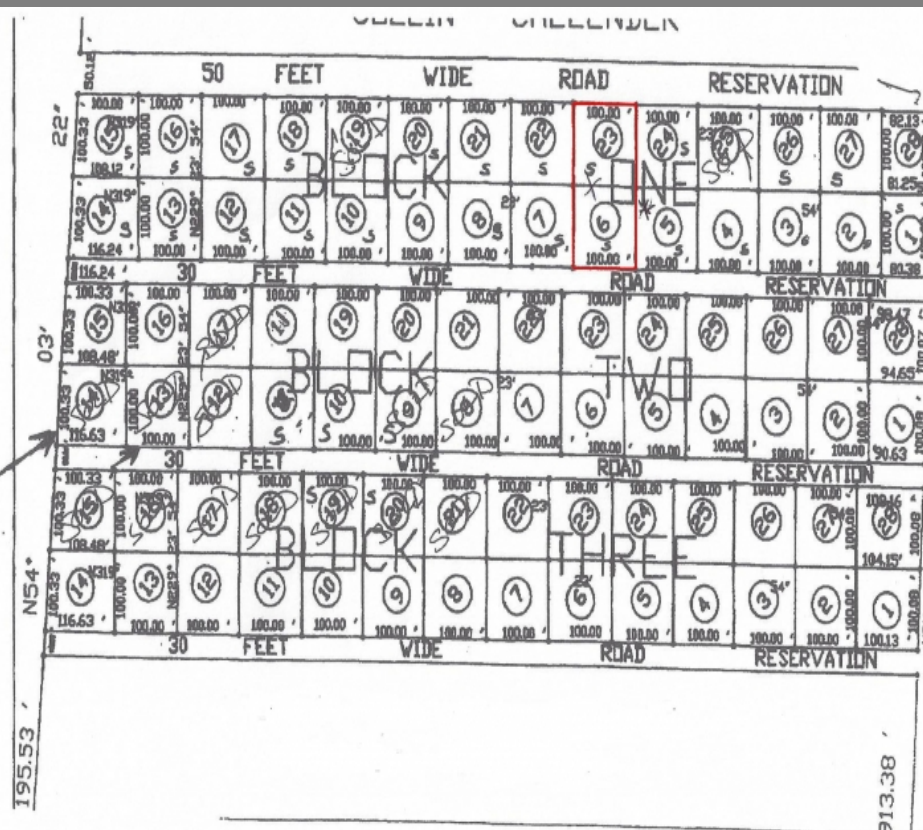
Long Island

Single Family Vacant

REF#7934

**COLDWELL
BANKER**

**LIGHTBOURN
REALTY**



SQ. FT.
20,000

\$60,000

Location: Long Island

Amenities: .

Summary: These two lots are located in a quiet residential area about 8 miles from the Islands capital, Clarence Town, where there are stores, Restaurants, Gas station, churches and a Marina as well as weekly mailboat service. This is an ideal place for a vacation Home.

Jeannette Knowles

Long Island, Bahamas
Cell: (242) 472-8459
Email: jeannette@cbbahamas.com
cbbahamas.com

