

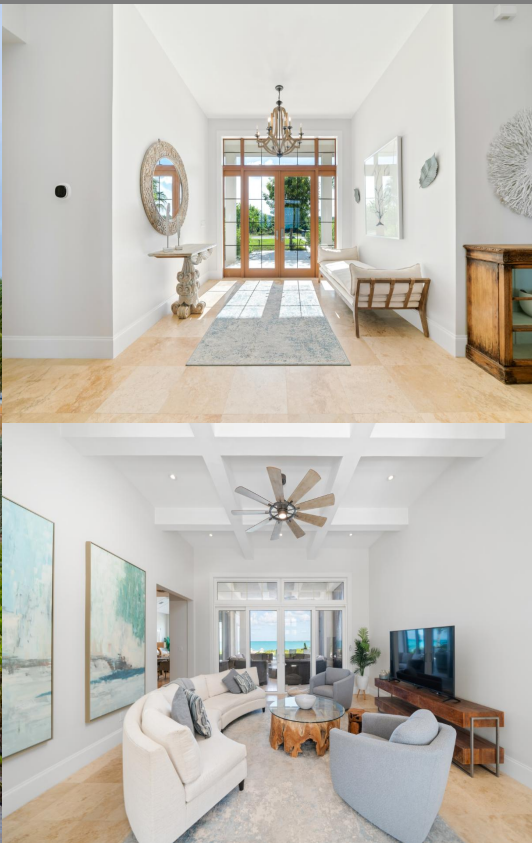
Queenâ€™s Highway, Exumas

Single Family Home

REF#55344



LIGHTBOURN
REALTY



LOT SIZE
18,970



SQ. FT.
3,958 sq.
ft.



BEDS
5



BATHS
5

\$3,195,000

Location: Queenâ€™s Highway, Exumas

Amenities: Beach Access,Beach Front,Hurricane Impact Windows,Luxury Property,Ocean Front,Ocean View,Pet Friendl.

Summary: "Seastheday" is a luxurious 5-bedroom, 5-bathroom beachfront home nestled in the private vacation community of Palmetto Bay Resort, in the heart of Great Exuma. This exquisite property exemplifies a harmonious blend of effortless luxury with coastal vibes, ensuring a pristine island experience with the utmost privacy.

As you step into Seastheday, you are greeted by a spacious and elegantly designed living area that seamlessly combines comfort with sophistication. Each of the five bedrooms is a haven of relaxation with top quality furnishings and luxurious linens. The ensuite bathrooms offer both privacy and convenience, making the home ideal for families or groups wishing to provide private spaces for children or guests.

The heart of the home is the chef's kitchen, equipped with high-end appliances that cater to every culinary need. Whether you're preparing a family meal or entertaining guests, the kitchen and its accompanying living room provides a perfect setting for creating memorable dining and entertaining experiences.

Heather Lightbourn

Nassau, Bahamas
Cell: (242) 477-7223
Email: heather@cbbahamas.com
cbbahamas.com

