

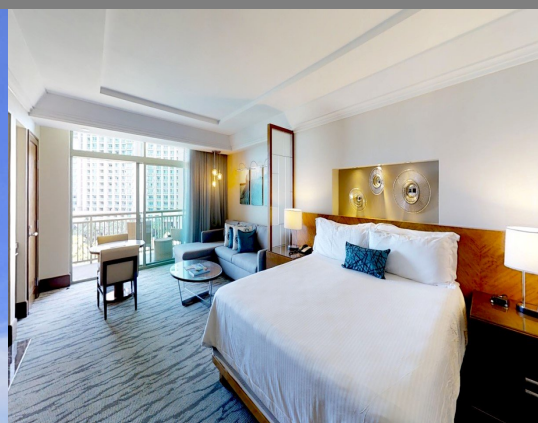
# The Reef At Atlantis, Paradise Island

Condo/Townhouse

REF#48200

**COLDWELL  
BANKER**

**LIGHTBOURN  
REALTY**



SQ. FT.

523 sq. ft.



BEDS

1



BATHS

1

**\$399,000**

Location: The Reef At Atlantis, Paradise Island

Amenities: 24-Hour Security, Beach Access, Beach Front, Community Pool, Gated Community, Generator, Golf Course, Gym, H.

Summary: Situated on the 16th floor of The Reef, Atlantis, Paradise Island, this suite offers the best in luxury island living in a Condo-Hotel concept. The unit offers incredible resort and ocean views from its private balcony.

Suite 16-902 is fitted out with a kitchenette, spacious closet, LCD flat screen TV, a luxury bathroom with a soaking tub & separate shower, double sinks, owners'™ locked closet, a queen bed and a pull-out sofa bed to comfortably sleep up to a family of 4.

Ownership at The Reef provides owners with access to all of Atlantis' amenities, full concierge through a VIP owner services and discounts throughout the resort. A small grocery shop and Starbucks coffee are located in the Reef's™ lobby and fine dining options are within walking distance. A beachside family pool is reserved exclusively for Reef and Cove owners in addition to an adult only pool and outdoor casino.

Heather Lightbourn

Nassau, Bahamas  
Cell: (242) 477-7223  
Email: [heather@cbbahamas.com](mailto:heather@cbbahamas.com)  
[cbbahamas.com](http://cbbahamas.com)

