

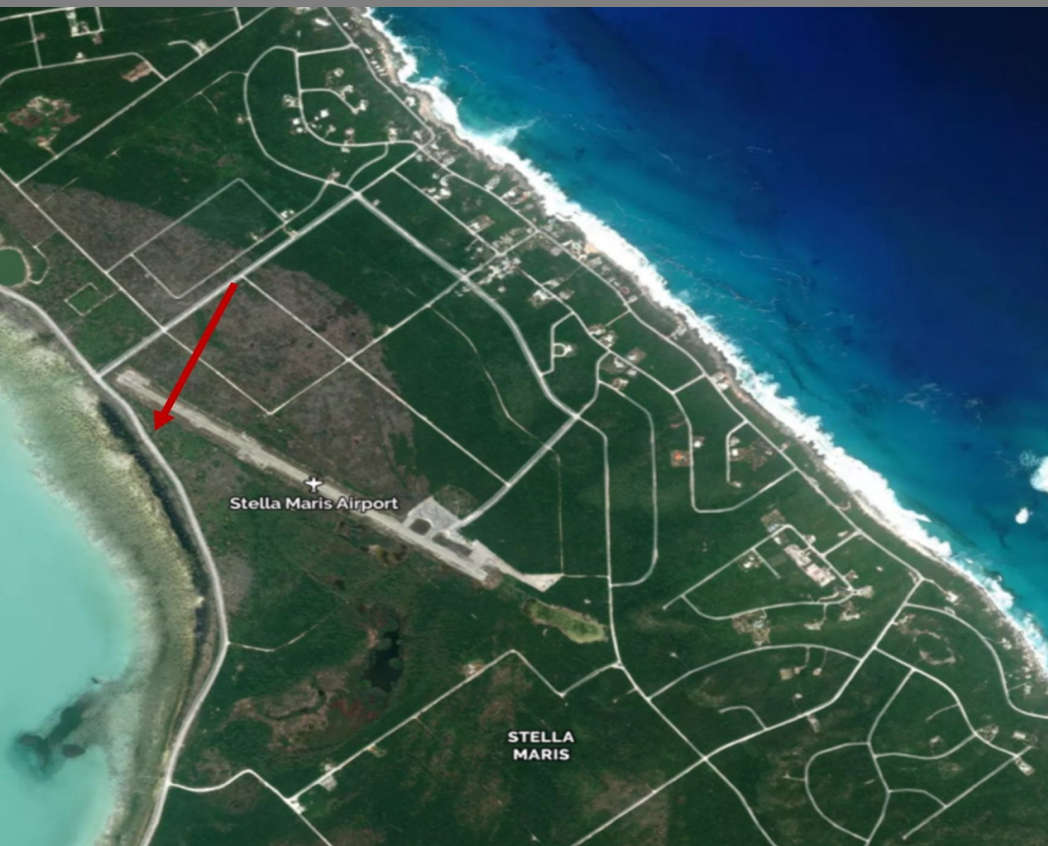
Stella Maris, Long Island

Single Family Vacant

REF#44537

**COLDWELL
BANKER**

**LIGHTBOURN
REALTY**



LOT SIZE

3.099
acres

\$30,000

Location: Stella Maris, Long Island

Amenities: Pet Friendly, Vacation Rentals Allowed.

Summary: Over three acres of property in Stella Maris on Queen's Highway offers a great opportunity for you to build your "home away from home". It is close to shopping, the airport, and the Stella Maris Marina and Resort. One can enjoy the beautiful beaches that are only a few minutes drive from this acreage. Excellent deep-sea fishing and diving are also nearby. The lot offers a southern exposure of the island.

Jeannette Knowles

Long Island, Bahamas
Cell: (242) 472-8459
Email: jeannette@cbbahamas.com
cbbahamas.com

