

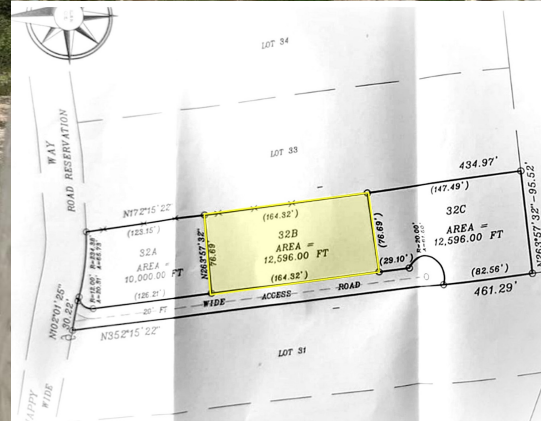
# Nassau / New Providence

Single Family Vacant

REF#46379



LIGHTBOURN  
REALTY



LOT SIZE

12,596 sq.  
ft.

\$150,000

Location: Nassau / New Providence

Amenities: .

Summary: Lot 32B is located within the major growth area of Western New Providence, this 12,596 sq. ft. single family lot in Love Estates, is in an ideal location. It is within easy access of the International Airport, the Old Fort Bay shopping complex and the Cable Beach shops, restaurants and beaches plus the Bahamar Complex of Hotels, restaurants, water parks, and Casino. Utilities include Electricity, Telecommunications, Cable and Internet, accessed by utility poles located along the Northern paved boundary road. Water is provided by municipal supply.

Garry Markham

Nassau, Bahamas  
Cell: 242.357.9196  
Email: [garry@cbbahamas.com](mailto:garry@cbbahamas.com)  
[cbbahamas.com](http://cbbahamas.com)

