

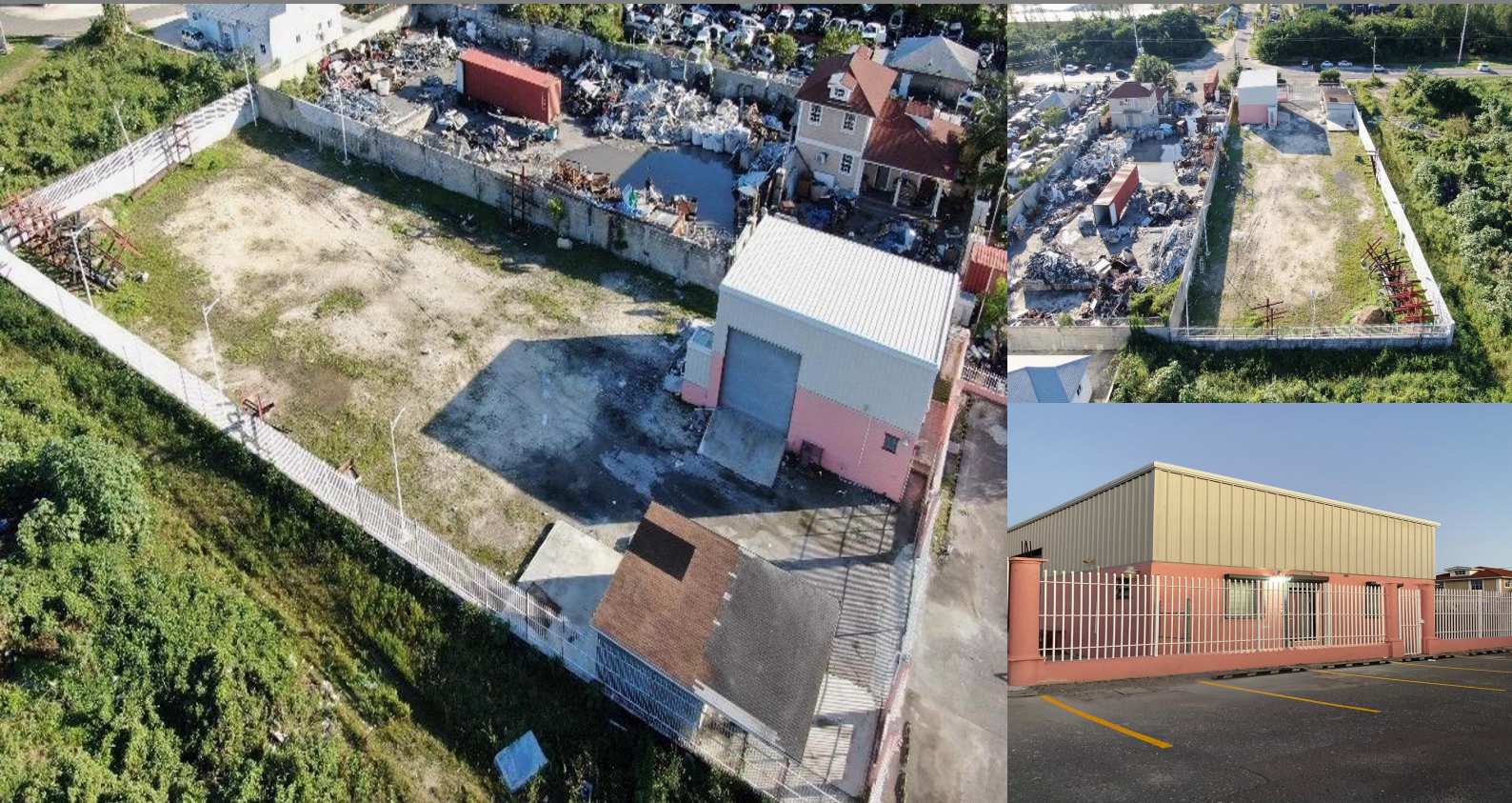
Gladstone Road, Nassau / New

Providence

REF#47987

**COLDWELL
BANKER**

**LIGHTBOURN
REALTY**



LOT SIZE

25,000 sq.
ft.



SQ. FT.

2,000 sq.
ft.

\$11,000

Location: Gladstone Road, Nassau / New Providence

Amenities: .

Summary: This structurally sound facility is located off Gladstone Road, in one of Nassau's industrial hubs. The 2,000 sq. ft. warehouse houses office spaces on both the ground floor and a section of the second floor.

Attached to the warehouse is a 16-foot metal roll-up door that opens to the 25,000 sq. ft. lot the building sits on.

This warehouse facility is ideal for anyone in the import/export business or any industrial related business looking to house heavy-duty equipment. The property is fully enclosed with metal fencing and a large security gate out front. Parking is available for both clients and employees.

Large in scale, with ample room, both on the inside and outside, this facility's business potential is endless.

Claud Clarke

Nassau, Bahamas
Cell: 242.429.7619
Email: claud@cbbahamas.com
cbbahamas.com

