

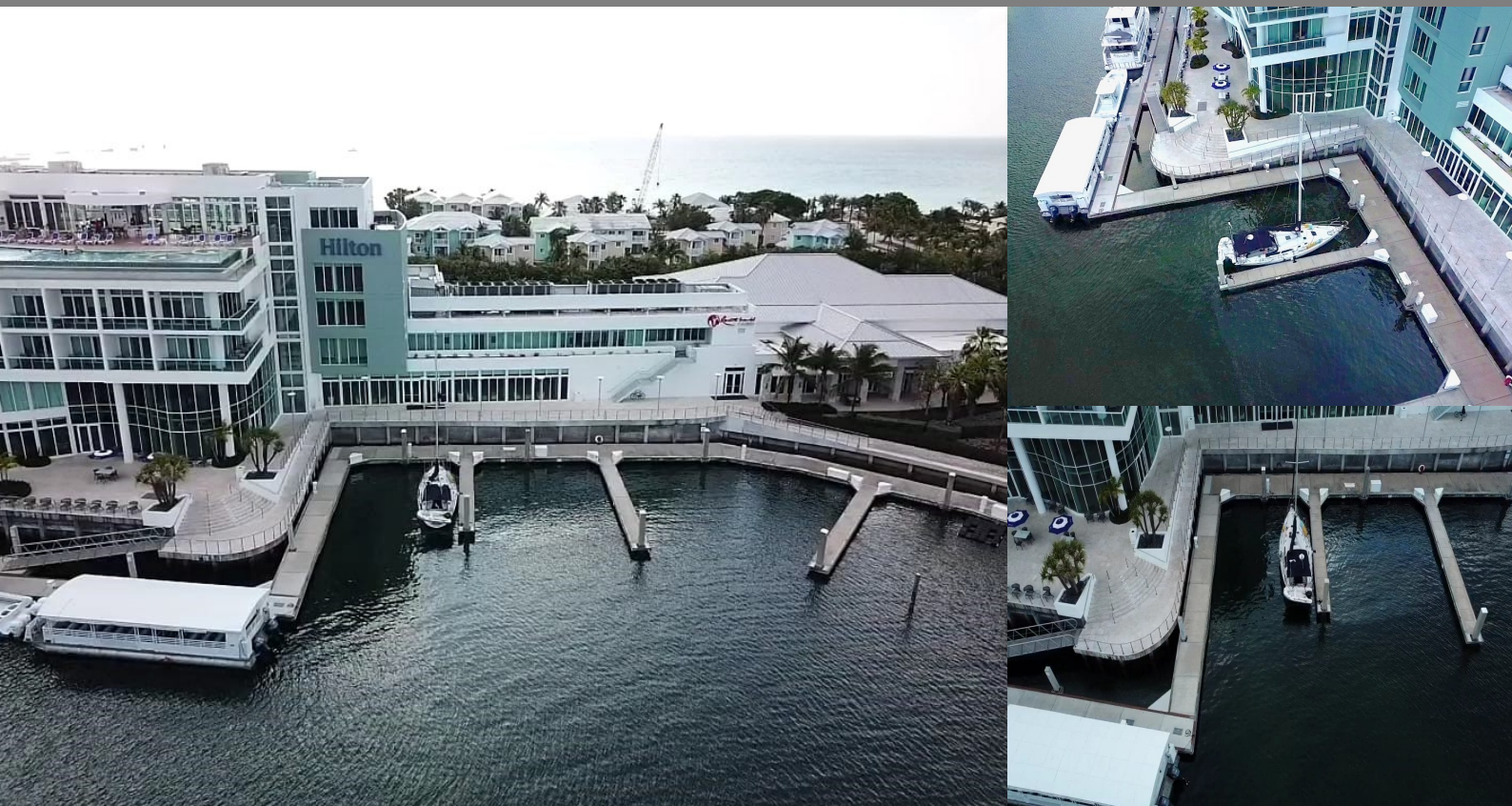
# Bimini Bay, Bimini

Dockslip

REF#48577

**COLDWELL  
BANKER**

**LIGHTBOURN  
REALTY**



LOT SIZE

40 feet

**\$220,000**

Location: Bimini Bay, Bimini

Amenities: Beach Access,Community Dockage,Community Pool,Ocean View,Private Dockage.

Summary: The Bimini Bay Mega Marina is a luxury mega-yacht marina just off the coast of Florida, with all the pleasures of The Bahamas. This marina is an official port of entry into The Islands of The Bahamas, offering Customs and Immigration to make your entry process easy and convenient. This slip Exuma #1, is a 40ft marina slip located at the Bimini Bay Mega Marina it is a rare preferred slip situated at the bulkhead of the Hilton at Resorts World Bimini Hotel. It is within.

As an investment, these slips rent for an average of \$5.30 per ft. per day with a minimum charge of 40ft. The monthly dues on Exuma #1 is \$350.00. These floating docks are in a protected area, perfect for boaters who may want to stay for a few hours, overnight or for an entire season. You can walk right up to the resort's main amenities which include the lagoon-style pool, casino, and the resort's signature restaurants. Enjoy Bimini at your leisure, knowing your boat is taken care of with services and amenities that are second to none.

Guido Rolle

Bimini, Bahamas  
Cell: 242 359.8166  
Email: [guido@cbbahamas.com](mailto:guido@cbbahamas.com)  
[cbbahamas.com](http://cbbahamas.com)

