

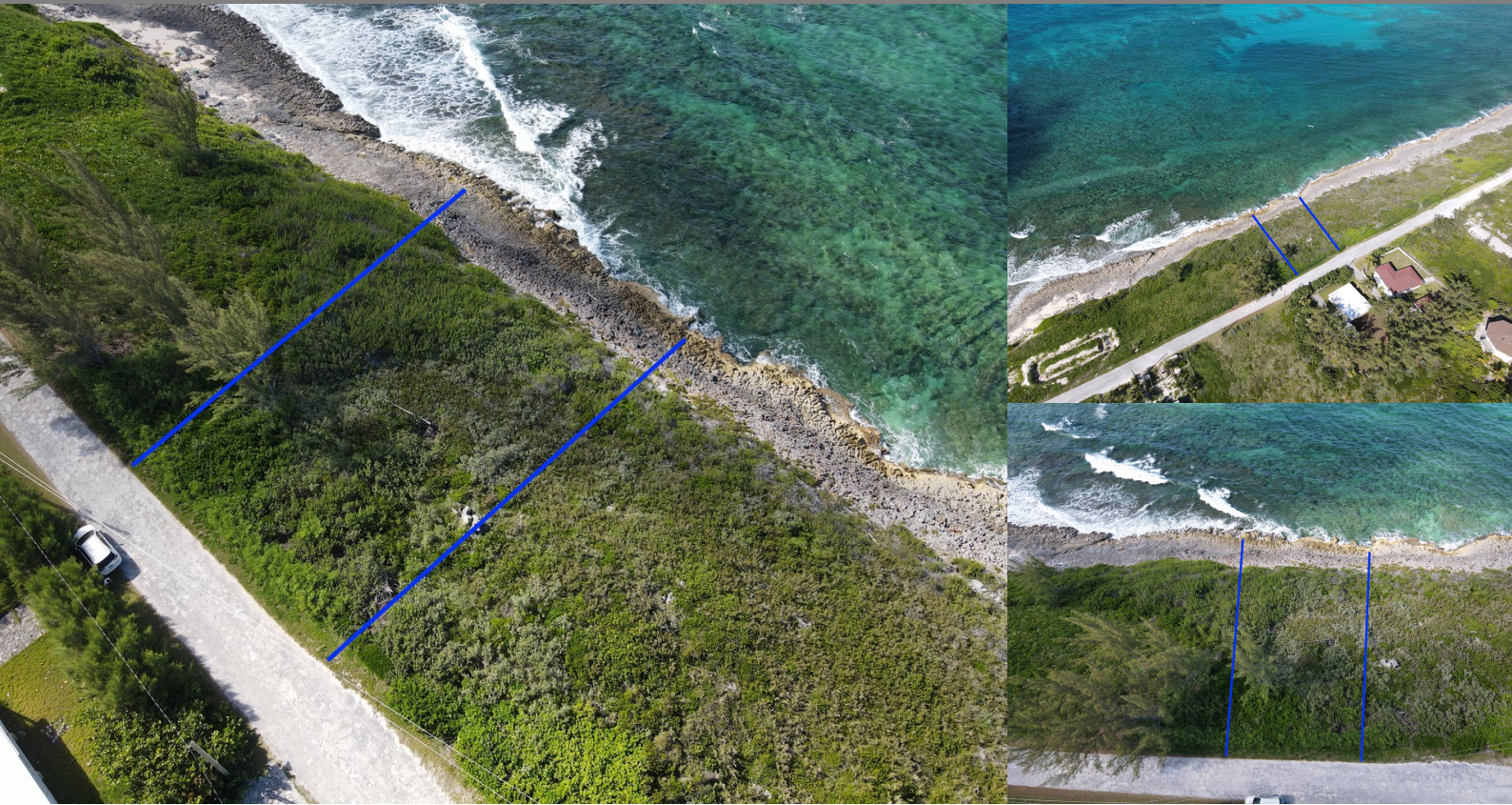
# Rainbow Bay, Eleuthera

Single Family Vacant

REF#49789

**COLDWELL  
BANKER** 

**LIGHTBOURN  
REALTY**



LOT SIZE

13,500 sq.  
ft.

**\$60,000**

Location: Rainbow Bay, Eleuthera

Amenities: Beach Access,Ocean Front,Ocean View.

Summary: Gorgeous ocean front lot, located on the Atlantic side of the island of Eleuthera, the jewel of the Bahamas! This elevated lot is conveniently located in the Rainbow Bay subdivision, in the center of mainland Eleuthera. Rainbow Bay is 20 minutes from Governor's Harbour and 20 minutes from Gregory Town. Enjoy quick access to several beaches in the community with Hidden Beach being just steps away. Enjoy the sunrises each morning on this east facing waterfront lot. Call today for more information on this stunning property!

Shannon Knowles

Eleuthera, Bahamas

Cell: 242 427.0977

Email: [shannon@cbbahamas.com](mailto:shannon@cbbahamas.com)

[cbbahamas.com](http://cbbahamas.com)

