

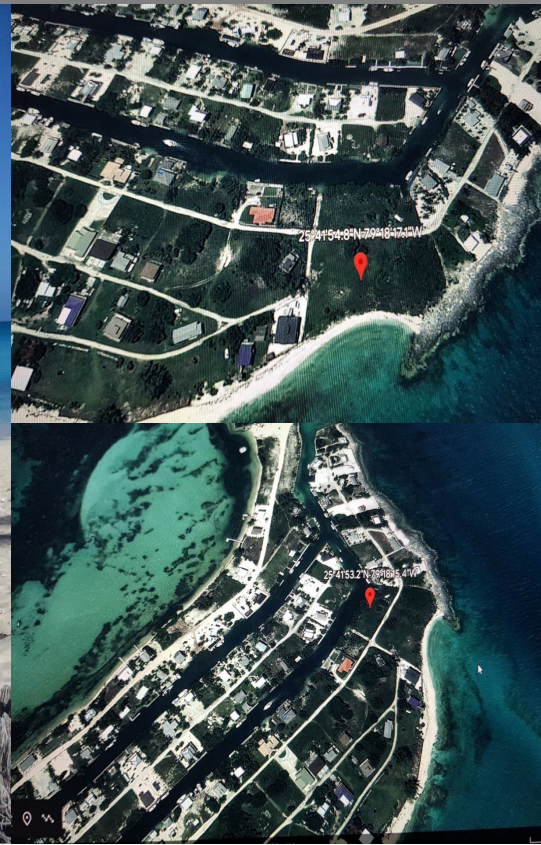
# Port Royal Subdivision, Bimini

Single Family Vacant

REF#53881



LIGHTBOURN  
REALTY



\$625,000

Location: Port Royal Subdivision, Bimini

Amenities: Beach Access, Beach Front, Canal Front, Ocean Front, Ocean View.

Summary: Nestled in a coveted location, this extraordinary property offers a rare opportunity to experience the ultimate beachfront lifestyle. Boasting an impressive 117 feet of pristine, white sandy beachfront, this retreat is an absolute paradise for beach lovers.

This property not only offers unparalleled beachfront living but also presents an exciting opportunity to fulfill your ultimate beach home dreams. Included in this package is a phenomenal 100x125 lot with 100 feet of canal frontage, providing a canvas upon which to create a private dock and guest cottage. With this incredible feature, you can seamlessly access the inviting waters or accommodate friends and family in their own cozy retreat.

In summary, this property is a true hidden gem, offering 117 feet of white sandy beachfront, clear and captivating azure and green waters, astounding sunsets, and the pleasure of snorkeling adventures from your own backyard.

Katherine Weech

Bimini, Bahamas  
Cell: (242) 359-8009  
Email: [katherine@cbbahamas.com](mailto:katherine@cbbahamas.com)  
[cbbahamas.com](http://cbbahamas.com)

