

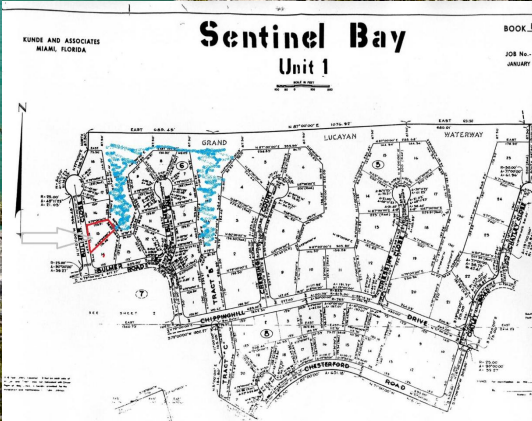
# Sentinel Bay Subdivision, Grand Bahama

Single Family Vacant

REF#44580



LIGHTBOURN  
REALTY



LOT SIZE  
17000



SQ. FT.  
17000



BEDS  
0



BATHS  
0

\$60,000

Location: Sentinel Bay Subdivision, Grand Bahama

Amenities: None,Easy Access,Golf Course,Ocean View,Shopping Nearby,Recreation Nearby,Quiet Area,No Thru Road,Ro.

Summary: Multi family property where Service charges have been paid for life! Beautiful views for a serene and private home on the canal. This property offers itself for your dream home especially if you love the water. Properties of this type are the most valuable and prices can only rise with time so it makes a sound investment also.

Office Listing

Nassau, Bahamas  
Cell:  
Email: sales@cbbahamas.com  
cbbahamas.com



COLDWELL BANKER  
LIGHTBOURN REALTY