

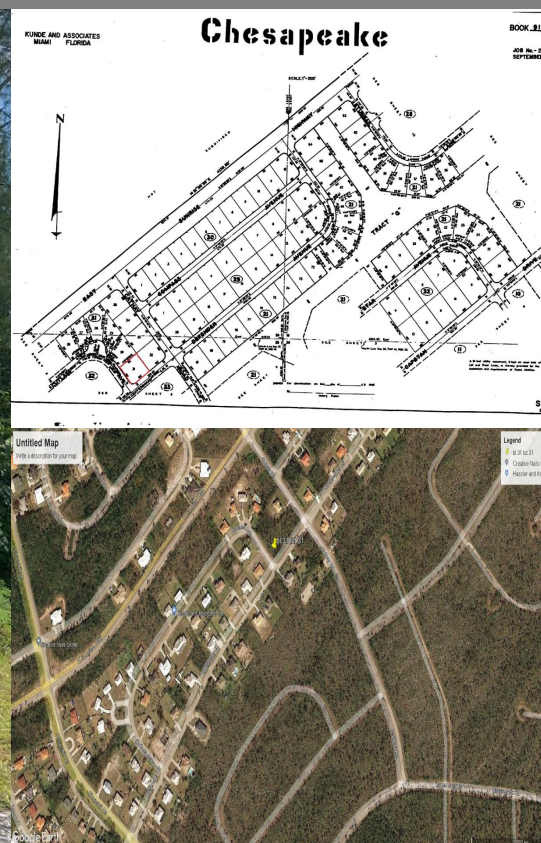
Chesapeake, Grand Bahama

Single Family Vacant

REF#54861

**COLDWELL
BANKER**

**LIGHTBOURN
REALTY**



LOT SIZE
18750



SQ. FT.
18750



BEDS
0



BATHS
0

\$22,000

Location: Chesapeake, Grand Bahama

Amenities: None, Easy Access, Family Oriented, Highway Access, Shopping Nearby, Treed Lot, Recreation Nearby, Quiet Ar.

Summary: This lot is ideal for your family home. Situated at the corner of Centreboard Lane and Cutlas Avenue, this lot has an elevation of 40' above sea level and measuring 125' x 150'. Recently developed middle class neighbourhood, surrounded by newer single family homes. Well located 3 miles to the nearest Food Store and 7.8 miles to the airport

Office Listing

Nassau, Bahamas

Cell:

Email: sales@cbbahamas.com

cbbahamas.com



COLDWELL BANKER
LIGHTBOURN REALTY